

In the age of abundance, Companies find hard to get noticed. Real Competition no longer revolves around market share. We are in competition for attention—mind share and heart share. People have become used to great value for money. To succeed, we surprise people. We have to attract and addict them.

Sino Siam Carpet



**SINO
SIAM
CARPET**



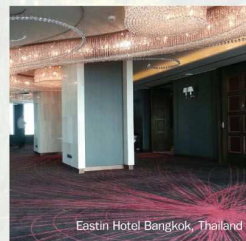
Hotel Muse Bangkok, Bangkok, Thailand



in Residence Bangkok Sukhumvit, Thailand



The Berkeley Hotel Pratunam, Thailand



Eastin Hotel Bangkok, Thailand



Hotel Muse Bangkok, Bangkok, Thailand



Bangkok, Thailand



SinoSiam Carpet Co.,Ltd.

370/15 Sridarn 7 Moo .5 Srinakarin Rd.,
North Samrong Mueng Samutprakarn,
Samutprakarn 10270, Thailand

Tel : ++66 2385 7144

Fax : ++66 2385 7145

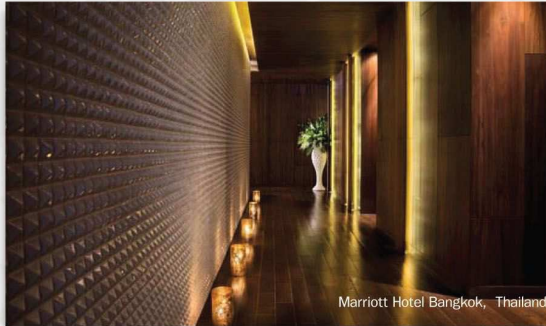
Email : info@sinosiamcarpet.com

INNOVATIVE THINKING

Le Symonee Flor, a market – oriented foundry which combines technological development, manufacturing aids and trade into its own operation, with the right of self-managed export and boasts its state – of – art craftsmanship, profound technical command and well-equipped quality control measures.



Hansar Hotel Bangkok, Thailand



Marriott Hotel Bangkok, Thailand



Hansar Hotel Bangkok, Thailand

We advocate an enterprise spirit of devotion to career for perfection, consolidation of all effort for development, commitment in technological innovation. We hold on to a managing concept of creating big brands by relying on science and technology, vying for best service by providing an excellent source. Our company has adopted the modernized enterprise-managing model to invent and build up our own style.



Regency Hotel, Kuwait



INDUSTRY EXPERIENCE

Quality counts but at the same time we are mindful of costs and you will find us highly competitive. Le Symonee Flor is an emerging force in the global carpet market place and we would like to take this opportunity to show you why...

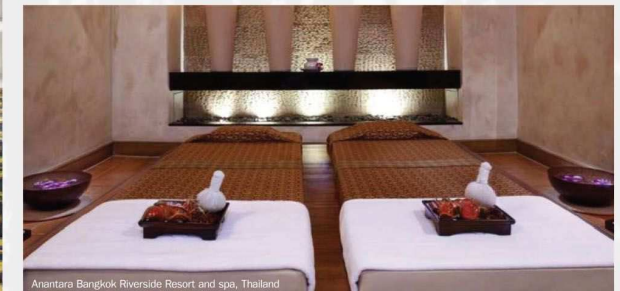


Hua Chang heritage Hotel, Bangkok



Best Western premier Pattaya, Thailand

Our company clinches onto the principle of scientific management and technological innovation to provide high standard floor products for the worldwide clients. In several foreign countries in The Middle-East, America, Africa, Europe, Australia as well as various other regions in Asia. We are with the Enterprise that takes priority on contracts with commitment, and Aristocratic Quality control measures.



Anantara Bangkok Riverside Resort and spa, Thailand

VISION



Amari Nova Suites Pattaya, Thailand

Mission Statement

We believe that focusing on the needs of our customers is the key to our success. Thus, our goals are....

* To continuously improve the quality of the products and services. We provide to our customers.

* To develop and build unique, first class facilities to provide our customers with the highest possible level of value, quality and service.

* To represent the highest standard of professionalism in all our endeavors, with the utmost respect for people.

* To encourage and maintain an entrepreneurial spirit within our company so that individuals, working together as a team, can take our company to levels that are limited only by our will and imagination.

* To provide valuable training for our people, and a safe, clean workplace.

* To remain sensitive to, and conduct ourselves as good stewards of our natural environment around the world.

* Finally, it is our belief that God has a purpose for our company. We pray that He will grant us wisdom, vision and humility in our work, and that He will not allow us to rest on the efforts of those who have gone before us.

Le Symonee Flor has a very simple but highly effective vision :

" To achieve growth and profitability by exceeding customer expectations."

This breaks down into these key components :

| | |
|-----------------|---|
| Growth : | Sustainable growth in business, organisation and individual assets. |
| Profitability : | Profit in all business activities. Improvements in operations and targets. |
| Exceeding : | Meeting needs that the customer is willing to pay for and exceeding those of competitors. |
| Customer : | Select customers that the company can serve well. Target niches of strength will add value. |
| Expectations : | Systematically uncover customer needs and values and understand them. |

The Formula for achieving this is equally straight forward and successful : PPPI, which means placing emphasis on Profit (In Value), Position, People, and Innovation.

| | |
|--------------|---|
| Profit : | All activities should bring value to both the customer and to Le Symonee Flor. We must select markets where we can be among the top players. We are committed to be distinct from the leaders in the markets we select. |
| Position : | To meet customer needs, we must have the right business processes. It is essential to develop or recruit competence and skills to perform these processes. |
| People : | To grow, we must develop new productions and marketing concepts, and improve our work processes. Our customers should feel that we drive the markets and innovate. |
| Innovation : | |



Marriott Hotel Bangkok, Thailand

Renaissance Marriott, Thailand

Marriott Hotel Bangkok, Thailand

THE CONCEPT THE ATTITUDE

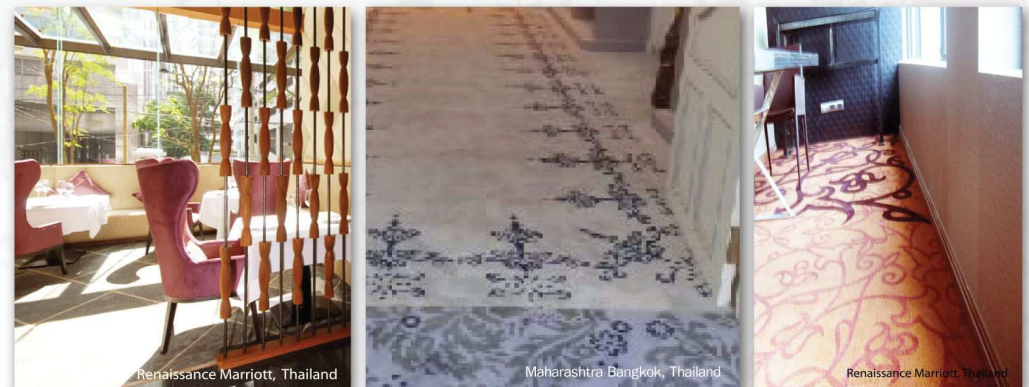


Marriott Hotel Bangkok, Thailand

Hansar Hotel Bangkok, Thailand

Hansar Hotel Bangkok, Thailand

At Le Symonee Flor, Our goal is to make the right thing happen by working closely with our customer... to turn our collective ideas and challenges into concepts and prototypes that are evaluated and perfected, and enable the materialization of production solutions and innovations.



Renaissance Marriott, Thailand

Maharashtra Bangkok, Thailand

Renaissance Marriott, Thailand

Le Symonee Flor combines insightful R&D, thorough product testing, cutting - edge CAD engineering, dynamic computer - aided design, unrelenting quality assurance, and carefully coordinated production scheduling and control into a master matrix, totally focused on the all important goal of complete customer satisfaction.



Crystal Design Center (CDC) Bangkok, Thailand

NOW & FOREVER



Quality and innovation – Nothing new to Le Symonee Flor & Company
Through international sales : Le Symonee Flor stand at the ready as a single source provider of products and services to organizations that operate in multiple locations worldwide. Le Symonee Flor quality is evidenced by the array of awards won.



Quality Assurance

We are incorporated in Product Development & Quality Control Center under the authority of Textile Committee in Thailand ensuring :

- * Quality Controlling System.
- * Professional order from management system.
- * First-class professional technique.
- * Strong line up of designers.
- * Wide Technique support.



CORE ASSETS

With Le Symonee Flor.

No Minimums : Order what you need, when you need it. Any Quantity, anysize, any time. If it is possible in your mind, it is possible with us. Le Symonee Flor offers a revolutionary break through in product, technology, and service



Our carpet resolves the conflicts between time, cost and creative choice that hamper project after project. By giving you the freedom to create custom color palettes from a selection of over 400 colors at no extra charge ; by letting your request custom colored mock ups and production orders if virtually any size, with no minimum ; and by eliminating long lead times that keep people from getting what they want it. Le symonee flor makes a whole new range of service and creativity possible.



Design to suit your art style :

Whether it is traditional, contemporary, exotic, romantic, or transitional, Le Symonee Flor has a design to meet yur needs. We currently have over 10,000 designs archived.

Three Easy Ways to Make it Yours :

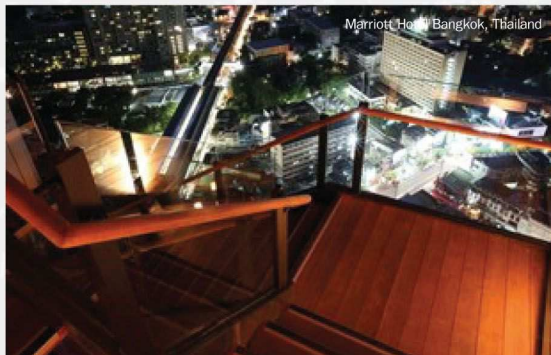
- Choose it : Top 250 designs—as is –and we'll ship a sample within 72 hours and ship your order within 21 days of approved sample.
- Change it : See a design in a colorration you like but want to tweak it? Chang the base, the background color, an accent color or the entire color palette. After changes are approved, we'll ship sample within 72 hours and ship your goods within agreed days of approved sample.
- Customize it : Start from scratch. Work with one of our designers to create the look you have in mind—from small design changes to total custom carpet design. Once the design is created and approved we'll ship samples with in 72 hours and ship your order within agreed days of approved sample depending on order quantity.

PATTERN BROADLOOM FLEXIBILITY MACHINE TUFTED CARPET



Naturally, carpet that performs well does a better job of retaining its appearance. And beautiful appearance is an integral part of maintaining your image. Le Symonee Flor brings a comprehensive range of broadloom cut pile and loop pile carpets for the hospitality market, where customers have a choice of a number of qualities that are suited for different traffic applications, such as guestrooms, corridors, and public areas. Le Symonee Flor is also able to offer the carpets in 100% Nylon, 80% / 20% Wool / Nylon, and 100% Wool or other blends.

Looking for a lower cost alternative to woven carpets? You are at the right place. We offer a large stock range of broadloom carpets that vary in design, specification, quality and price. Our machine tufted are applicable for both domestic and commercial applications. Our broadloom comes in cut, loop and twist pile to create changes in texture.



CARPET TILE

Carpet Tiles the most exciting and fastest growing sector in the area of carpet turnover. Our large variety in carpet tiles will satisfy every specification, from the office to the boardroom, from building projects to property refurbishment. Our various constructions of carpet tiles, each designed to bring a different benefit or aspect to the installation.



package including

- 5 Year Fibre loss Warranty
- 5 Year Wear Warranty
- 5 Year Sustainable Image Assurance
- 100% Backing Delamination Warranty
- 5 Year Stain Removal Warranty
- 10 Year Color fast Warranty to light
- 5 Year Color fast Warranty to atmospheric contaminants
- Flammability Guarantee
- Lifetime Antistatic Guarantee
- *Condition Applies.



HAND TUFTED CARPET



Maharashtra Bangkok, Thailand



Marriott Hotel Bangkok, Thailand



Maharashtra Bangkok, Thailand

Our custom made hand tufted carpets are a combination of human imagination intergraded with state-of-art computer technology with unlimited design or quality required. We can offer a wide range of designs to choose from, which have been carefully fabricated taking into consideration the latest trends and fashion in the flooring industry. We do not constrain our customers to standard specification and can go up to any complication if required as Wool or Silk of 15 lbs/ sq.yd.



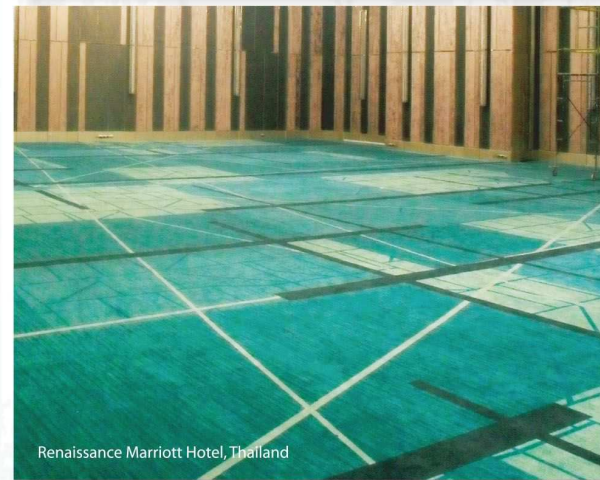
Maharashtra Bangkok, Thailand

AXMINSTER-WOVEN CARPET

Our Axminster's are well known for their designs and elegance. They are rightly regarded as one of the finest quality axminster available, while meriting its reputation as a carpet of pure unashamed luxury. Le Symonee Flor's axminster carpets are manufactured with great care and attention on the original looms providing a legendary standard of luxury and consistency that has truly lasted the test of time. Because of various loom widths, 0.914m, 2.05m, 2.74m, 3.66m and 4.00 m., couple with electronic computer jacquard machine capable of producing with almost no limited to the length of pattern repeat.



Marriott Hotel Bangkok, Thailand



Renaissance Marriott Hotel, Thailand



Marriott Hotel Bangkok, Thailand

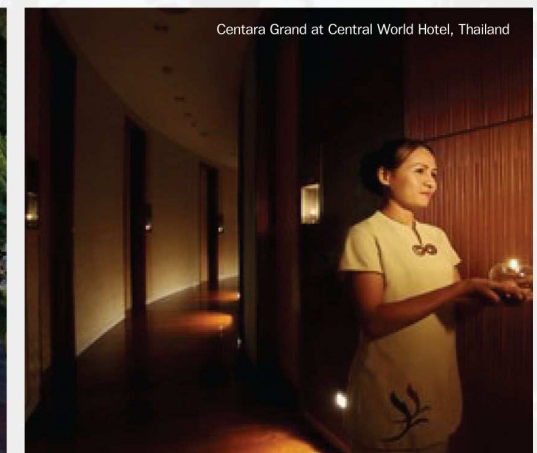
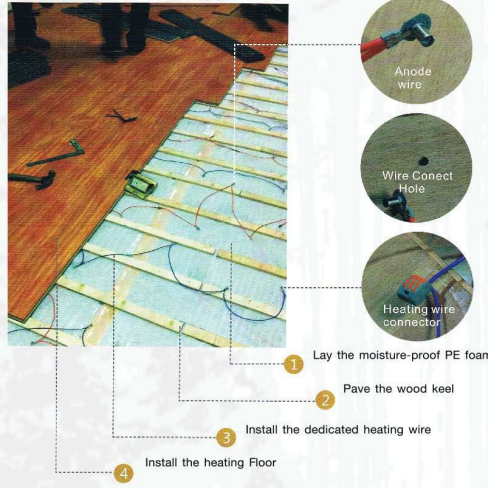
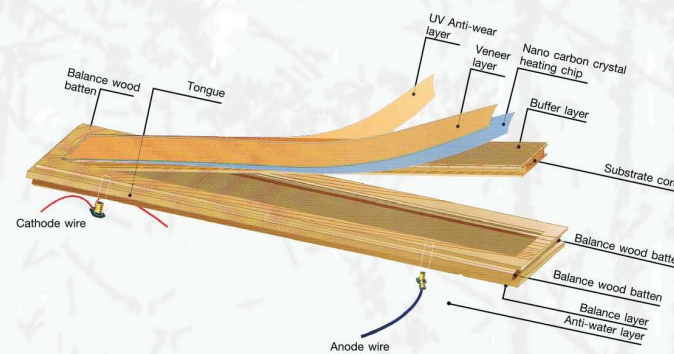


Marriott Hotel Bangkok, Thailand

ENGINEERING HARDWOOD FLOORING



- A) Weakening the stress in the wood fiber.
- B) Increasing the interlock strength.
- C) Offsetting the stress between two adjacent pieces flooring.
- D) Making the joint floorings hard to rotate or arch by forming two axes between them.
- E) Enlarging the interface of the joint.



LAMINATE FLOORING



STRUCTURE

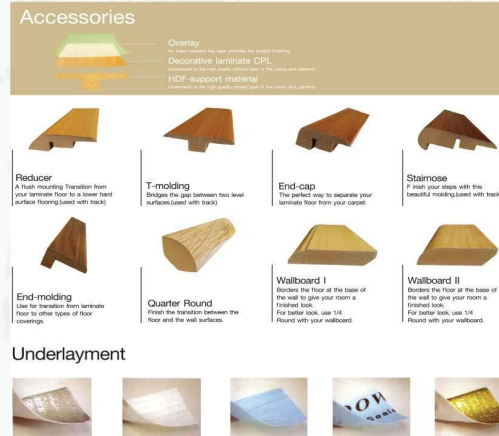
- 1. Overlay:** keeps superior abrasion resistance, heat resistant and fire retardant
- 2. Decor paper:** ultraviolet radiation resistant, various colors to choose, make different living and individuation
- 3. HDF:** E1 environment classification, absorption rate and moisture rate is below European standard
- 4. Balance backing:** balance the plank and give the moisture protection



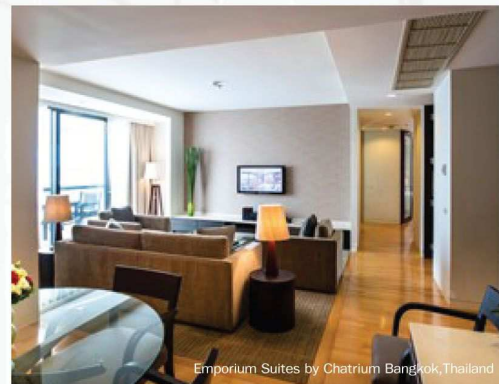
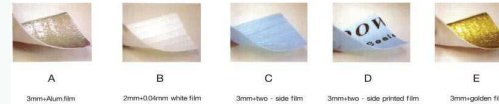
Sheraton Hotel Bangkok, Thailand



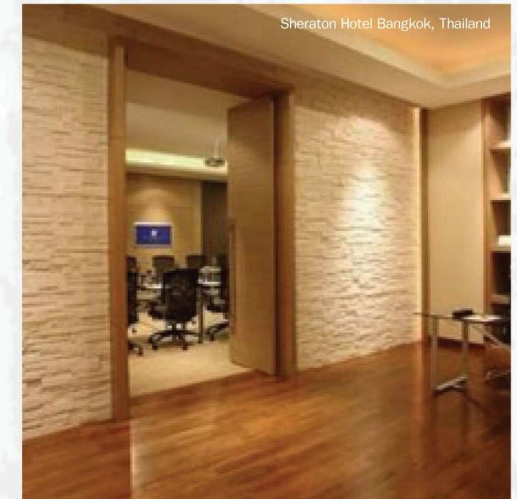
The Okura Prestige Bangkok, Thailand



Underlayment



Emporium Suites by Chatrium Bangkok, Thailand



Sheraton Hotel Bangkok, Thailand



In Residence Bangkok Sukhumvit Bangkok, Thailand



Shangri-La Hotel, Bangkok, Thailand



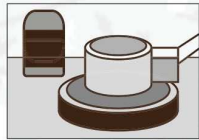
Sheraton Hotel Bangkok, Thailand

VINYL FLOORING

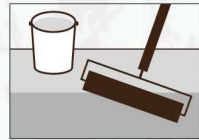
Flooring installation process



1. Flooring check



2. Flooring Preparation



3. Ground Layer priming



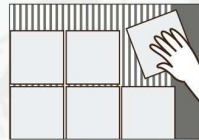
4. SLC construction-Mixing



5. SLC construction



6. Flooring Installation -Glue coating



7. Flooring Installation -Sticking



8. Flooring Installation -exhaust,roll pressing

INSTALLATION



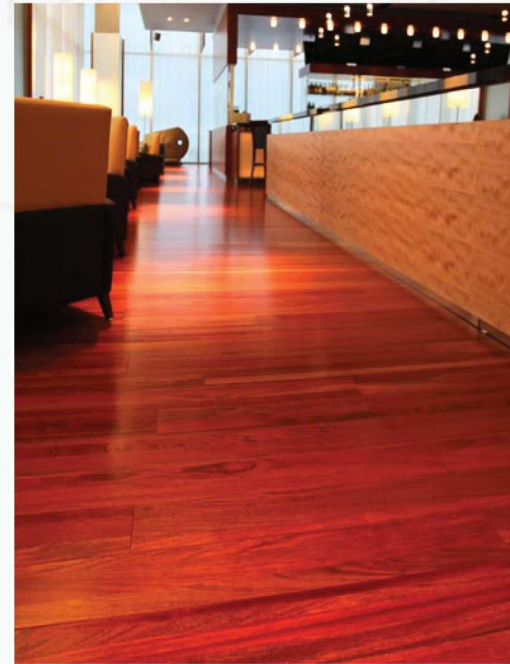
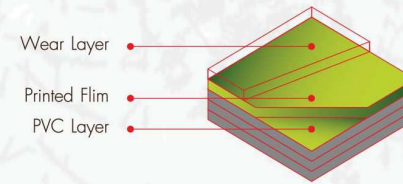
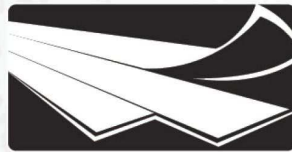
1



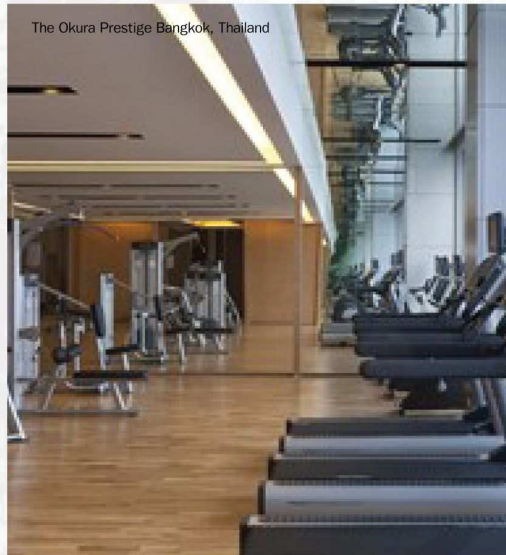
2



3



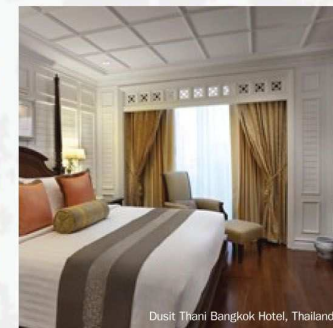
Pathumwan Princess Hotel, Thailand



The Okura Prestige Bangkok, Thailand



Dusit Thani Bangkok Hotel, Thailand



Dusit Thani Bangkok Hotel, Thailand



Dusit Thani Bangkok Hotel, Thailand

AQUAWOOD FLOORING

Art Wood Eco-Friendly Wood Floor Why Art Wood Introducts Floor ?

Le Symonee Flor the research and development of newtype eco-friendly building materials, Art wood/wpc

Le Symonee Flor is one of its brands, engaged in the production of 100% waterproof eco-friendly wood floor and interior wood doors.



Art wood Advantages:

- 100% waterproof
- No rotting, splintering or warping
- Environmentally Friendly
- Formaldehyde-Free
- No harmful chemical
- Fine sound insulation
- Strong re retarding
- Natural touch and feeling
- Easy installation

Le Symonee Flor is made of wood waste, recycled plastic and calcium carbonate etc., and laminated with high wear-resistant layer. It incorporates the advantages of both traditional interior floor and outdoor decking.

Le symonee flor Transitions & Accessories



Square Moulding

Finishes your laminate floor where wall and floor meet.



T-Moulding

Fill the gap at doorways, and finishes the spaces between the two areas of laminate floor.



Quarter-Round Moulding

The classic finish to your laminate floor, used where wall and floor meet



blue underlay of PE 0.04 mm +EPE 3.0 mm
moisture barrier
width: 1.1 m



End Moulding

Finishes the space where laminate floor ends(such as sliding glassdoors, along the wall bases, door thresholds and carpet).



Reducer

To form a natural transition from laminate floor to vinyl or carpet.

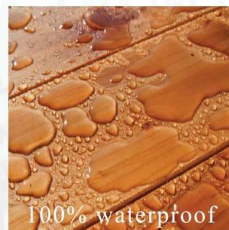


Staircase Moulding

Used where laminate floor meets a step down or landing.



kicking board



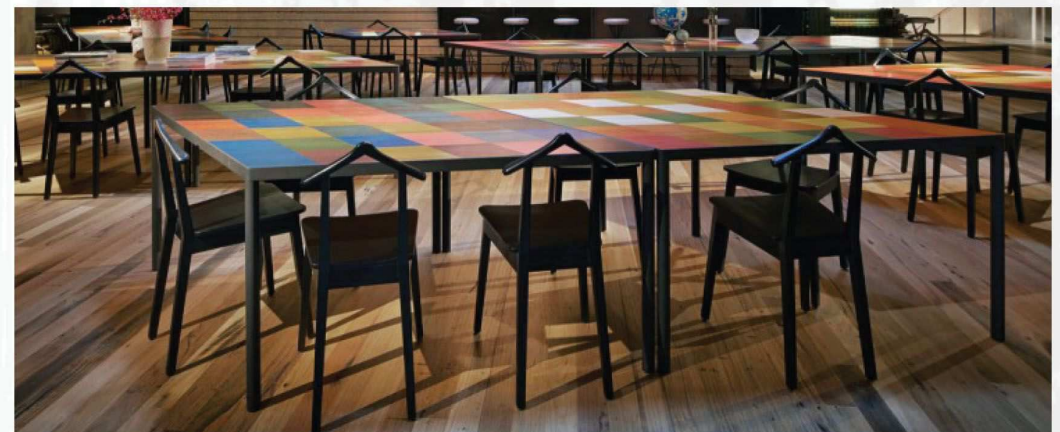
The Flooring
not afraid
of water...

Unique

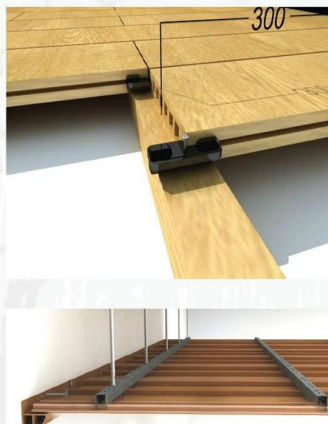
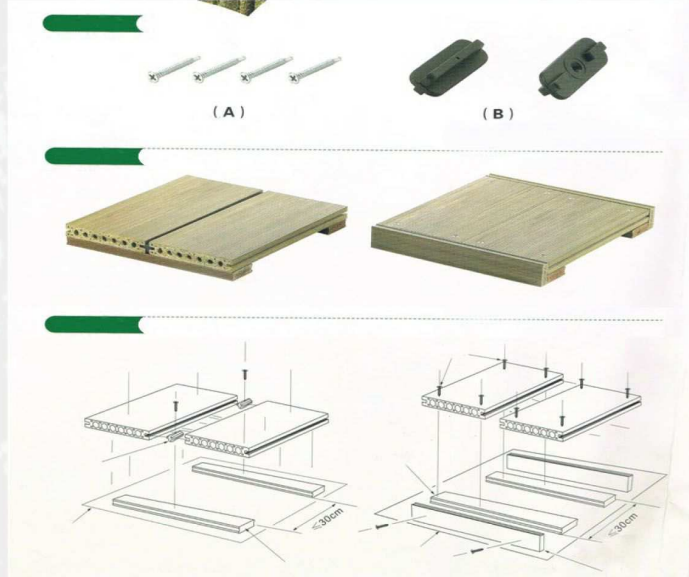
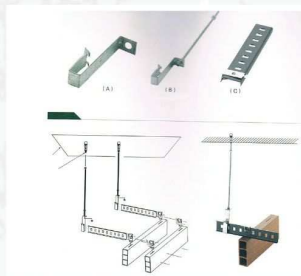
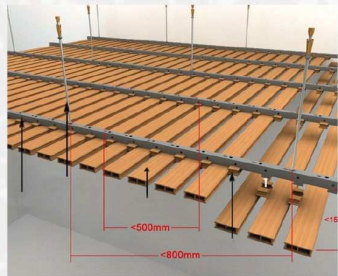


The surface and backboard of Art wood floor is made of HPL(Decorative High Pressure Laminate), and it is famous for the following points:

COLORS & TEXTURES AVAILABLE:



OUTDOOR DECKING



DISTRIBUTION

Across the world it's more than pattern, more than color, more than design it's the collective expression of your creativity. Le Symonee Flor transforms imagination into lasting style. More Hotel Groups have recognized the quality, innovation, flexibility, and service provided by our company. With market from Oceania to Atlantic, Le Symonee Flor is able to meet your requirements and exceed your expectations. To expand networks.



westin hotels&resorts Bangkokok, Thailand



Amin lounge in Vvip Airport, Kuwait



Marriott Hotel Bangkokok, Thailand



President Office Bangkok, Thailand



Westin Hotels & Resorts Bangkok, Thailand



Villa Palace Hotel Vietnam



Westin Hotels & Resorts Bangkok, Thailand



Al-Hadaway Grand Villa, Kuwait



Marriott Hotel Bangkokok, Thailand

JOB PROFILE

- * RENAISSANCE MARRIOTT, THAILAND
- * HANSA RESIDENCE BANGKOK, THAILAND
- * AMARI NOVA PATTAYA, THAILAND
- * THEPNKORN HOTEL BURIRUM, THAILAND
- * FERRARI, THAILAND
- * SHERATON HOTEL KARBI, THAILAND
- * LIBERTY SQUARE RESTAURANT, THAILAND
- * PATTAYA HISO HOTEL, THAILAND
- * MOVEVPICK HOTEL, THAILAND
- * PANAMA EMBASSY, THAILAND
- * CASINO VEGAS IN CAMBODIA
- * AMARI NOVA SUITES PATTAYA
- * THE ALCOVE HIPTIQUE BANGKOK, THAILAND
- * NAHM SANITARY WARE, THAILAND
- * DEPUTY'S OFFICE MINISTRY OF INDUSTRY, THAILAND
- * THE NATIONAL INSTITUTE OF DEVELOPMENT ADMINISTRATION (NIDA), THAILAND
- * AF 6 STUDIO BANGNA, THAILAND
- * KUWAIT EMBASSY, THAILAND
- * AUTO OPTION, THAILAND
- * CASA RIVAR CHALEARNKRUNG, THAILAND
- * BANGKOK LAND, THAILAND
- * THAIRE RATCHADA RD. THAILAND
- * WORLD PRO CHAENG WATTANA, THAILAND
- * KEENBIZ SUKHUMVIT 49, THAILAND
- * AGEL ENTERPROSED (THAILAND) LTD.
- * WORASOMBAT BUILDING RAMA 9, THAILAND
- * KUWAIT OIL TANKER, KUWAIT
- * SHANGRI LA VIENNA, AUSTRIA
- * REGENCY HOTEL, KUWAIT
- * AMIRI TERMINAL BUILDING, KUWAIT
- * KUWAIT NATIONAL ASSEMBLY, KUWAIT
- * KUWAIT EMBASSY, JORDAN
- * CAR MUSEUM, KUWAIT
- * MOFA, SAUDI ARABIA
- * VIP AIRPORT, KUWAIT
- * PRINCE SULTAN UNIVERSITY, SAUDI ARABIA
- * PRINCE MICHAEL, SAUDI ARABIA
- * KUWAIT PALACE HOTEL, KUWAIT
- * CARAVELLE HOTEL, SAIGON
- * SOFTEL HOTEL, HOCHIMINH, VIETNAM
- * KUWAIT AIRLINE, KUWAIT
- * GLORIA MARIS, PHILIPPINES
- * BAYAN PALACE, KUWAIT
- * WHITE PALACE SAIGON, VIETNAM
- * TNT EXPRESS WORLDWIDE (THAILAND)
- * GREENVIEW RESORT KARASIN, THAILAND
- * THE HEART BY SIRIRAJ FOUNDATION, THAILAND
- * PANASONIC ELECTRIC WORLD STEAL (THAILAND)
- * KESINEE VIEW, THAILAND
- * THAI NAVY ORDNANCE DEPARTMENT, BANGNA
- * PK STUDIO, THAILAND
- * CORTINA-ERAWAN SHOWROOM, THAILAND
- * MISTER CURTAIN, THAILAND
- * ISUZU MOTOR, SAMUTPRAKARN
- * THOSAPOL LAND BUILDING, THAILAND
- * LEGACY RESORT KARNCHANABURI, THAILAND
- * O.T.O SMART CORPORATION, THAILAND
- * WONG WAI VIT BUILDING, THAILAND
- * BOSS BUILDING, THAILAND
- * SINTHORN BUILDING, WIRELESS RD, THAILAND
- * SUPALAI RAMA 3, THAILAND
- * SUPALAI SRINAKARIN, THAILAND
- * CASA RIVER CHALEARNKRUNG, THAILAND
- * CENTRAL PATTAYA, THAILAND
- * BANGKOK LAND, THAILAND
- * OAKWOOD THONGLOK, THAILAND
- * MUTSUI HIGH-TEC (THAILAND)
- * SHINAWATRA TOWER 3, THAILAND
- * SUKHUMVIT CROWN HOTEL, THAILAND
- * KRUNG THAI - AXA, THAILAND
- * AMERICAN ACADEMY, THAILAND
- * CENTRAL CHAENGWATTANA, THAILAND
- * BEST WESTERN PREMIER SIGNATURE, PATTAYA
- * RS TOWER, RATCHADA THAILAND
- * BENZ THONGLOK, THAILAND
- * THE NEW INTERNATIONAL SCHOOL OF THAILAND (NIST)
- * PRIME MINISTER OFFICE, BANGKOK THAILAND
- * US EMBASSY HYDERABAD, INDIA
- * FILMISTAN STUDIO, MUMBAI, INDIA
- * MINISTRY ORGANISATION OF THAILAND
- * MRT, BANGKOK, THAILAND
- * HYATT PLACE RAMESHWARA (THAILAND)
- * CAT TELECOM PUBLIC CO., LTD. (CAT)
- * TCDC
- * CENTRAL CITY BANGNA
- * CENTARA HOTEL (THAILAND)
- * WESTIN HOTEL
- * LEXUS MOTOR THAILAND CO., LTD.
- * MINISTRY OF ENERGY